

June 3, 2025

Re: Taxiway Improvements  
Watertown Regional Airport  
Watertown, South Dakota  
AIP #3-46-0058-047/048-2025  
Helms #A-9070

Bid Opening: **June 5, 2025**  
**2:00 pm Local Time**

**ADDENDUM NUMBER 2**

The following modifications are made to the plans and specifications for the Taxiway Improvements Project, Watertown Regional Airport:

**PLANS**

**1. Construction Safety Phasing Plan Layout (Phase III), Sheet 5, delete in its entirety and replace with the attached sheet.**

Adjustments to the low profile barricades and closure of Taxiway A2 to allow for a new sign at Taxiway A/A2.

**2. Construction Safety Phasing Plan Notes, Sheet 8, Areas and Operations Affected by Construction Activity:**

Delete reference to Taxiway A2 being OPEN to Air Traffic During Phase III.

**3. Construction Safety Phasing Plan Notes, Sheet 9, Areas and Operations Affected by Construction Activity:**


Add Taxiway A2 as being Closed to Air Traffic During Phase III.

**ADDRESS CHANGE**

The City of Watertown is currently moving into their New City Hall Building. Below is the address for which bids shall be mailed or delivered to:

Office of the City Finance Officer  
20 N Maple  
P.O. Box 910  
Watertown, SD 57201

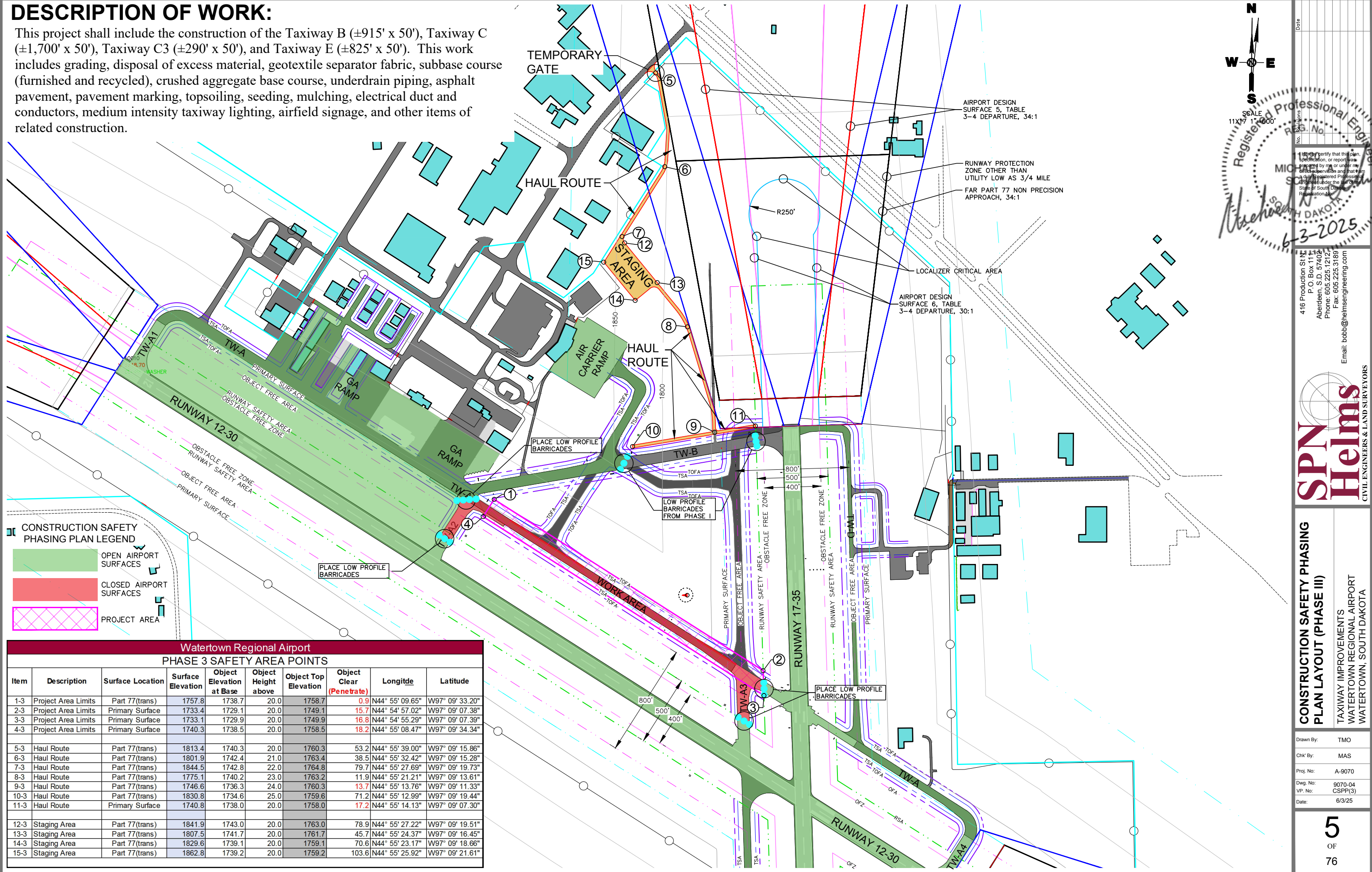
**ALL OTHER ITEMS OF THE PLANS AND SPECIFICATIONS REMAIN**  
**UNCHANGED**

BY:   
PROJECT ENGINEER, HELMS & ASSOCIATES

**Acknowledge receipt of the Addendum by inserting its number on the Bid Form. Failure to do so may subject bidder to disqualification. This Addendum forms a part of the Contract Documents. It modifies them as above.**

DESCRIPTION OF WORK:

This project shall include the construction of the Taxiway B (±915' x 50'), Taxiway C (±1,700' x 50'), Taxiway C3 (±290' x 50'), and Taxiway E (±825' x 50'). This work includes grading, disposal of excess material, geotextile separator fabric, subbase course (furnished and recycled), crushed aggregate base course, underdrain piping, asphalt pavement, pavement marking, topsoiling, seeding, mulching, electrical duct and conductors, medium intensity taxiway lighting, airfield signage, and other items of related construction.



CONSTRUCTION SAFETY PHASING PLAN LEGEND

- OPEN AIRPORT SURFACES
- CLOSED AIRPORT SURFACES
- PROJECT AREA

Watertown Regional Airport									
PHASE 3 SAFETY AREA POINTS									
Item	Description	Surface Location	Surface Elevation	Object Elevation at Base	Object Height above	Object Top Elevation	Object Clear (Penetrate)	Longitude	Latitude
1-3	Project Area Limits	Part 77(trans)	1757.8	1738.7	20.0	1758.7	0.9	N44° 55' 09.65"	W97° 09' 33.20"
2-3	Project Area Limits	Primary Surface	1733.4	1729.1	20.0	1749.1	15.7	N44° 54' 57.02"	W97° 09' 07.38"
3-3	Project Area Limits	Primary Surface	1733.1	1729.9	20.0	1749.9	16.8	N44° 54' 55.29"	W97° 09' 07.39"
4-3	Project Area Limits	Primary Surface	1740.3	1738.5	20.0	1758.5	18.2	N44° 55' 08.47"	W97° 09' 34.34"
5-3	Haul Route	Part 77(trans)	1813.4	1740.3	20.0	1760.3	53.2	N44° 55' 39.00"	W97° 09' 15.86"
6-3	Haul Route	Part 77(trans)	1801.9	1742.4	21.0	1763.4	38.5	N44° 55' 32.42"	W97° 09' 15.28"
7-3	Haul Route	Part 77(trans)	1844.5	1742.8	22.0	1764.8	79.7	N44° 55' 27.69"	W97° 09' 19.73"
8-3	Haul Route	Part 77(trans)	1775.1	1740.2	23.0	1763.2	11.9	N44° 55' 21.21"	W97° 09' 13.61"
9-3	Haul Route	Part 77(trans)	1746.6	1736.3	24.0	1760.3	13.7	N44° 55' 13.76"	W97° 09' 11.33"
10-3	Haul Route	Part 77(trans)	1830.8	1734.6	25.0	1759.6	71.2	N44° 55' 12.99"	W97° 09' 19.44"
11-3	Haul Route	Primary Surface	1740.8	1738.0	20.0	1758.0	17.2	N44° 55' 14.13"	W97° 09' 07.30"
12-3	Staging Area	Part 77(trans)	1841.9	1743.0	20.0	1763.0	78.9	N44° 55' 27.22"	W97° 09' 19.51"
13-3	Staging Area	Part 77(trans)	1807.5	1741.7	20.0	1761.7	45.7	N44° 55' 24.37"	W97° 09' 16.45"
14-3	Staging Area	Part 77(trans)	1829.6	1739.1	20.0	1759.1	70.6	N44° 55' 23.17"	W97° 09' 18.66"
15-3	Staging Area	Part 77(trans)	1862.8	1739.2	20.0	1759.2	103.6	N44° 55' 25.92"	W97° 09' 21.61"

North Arrow

Scale: 1" = 400'

Registered Professional Engineer

Michael S. Helms

6-3-2025

416 Production SIN  
P.O. Box 111  
Aberdeen, S.D. 57402  
Phone: 605.225.1212  
Fax: 605.225.3189  
Email: bob@helmsengineering.com

SPN Helms

CIVIL ENGINEERS & LAND SURVEYORS

CONSTRUCTION SAFETY PHASING  
PLAN LAYOUT (PHASE III)

TAXIWAY IMPROVEMENTS  
WATERTOWN REGIONAL AIRPORT  
WATERTOWN, SOUTH DAKOTA

Drawn By: TMO  
Chk' By: MAS  
Proj. No: A-9070  
Dwg. No: 9070-04  
VP. No: CSPP(3)  
Date: 6/3/25

5  
OF  
76



Addendum No. 2  
Page 1 of 2

DATE: June 3, 2025

PROJECT: Taxiway Improvements, Watertown Regional Airport  
Watertown, South Dakota  
DGR Project No. 730405

LETTING DATE: June 5, 2025  
AND LOCATION: City Office  
City of Watertown  
20 N. Maple  
PO Box 910  
Watertown, SD 57201

---

## **ADDENDUM NO. 2**

This Addendum forms a part of the Contract Documents and modifies the Contract Documents, Specifications, and Drawings as described below. The Bidder shall acknowledge receipt of this Addendum on the Bid Form as failure to do so may subject the bid to disqualification.

### **Contract Documents and Technical Specifications:**

#### **1. Proposal. Bid Schedule B – Electrical.**

- a. Bid Item 23: Per Addendum No. 1 for the revised Bid Schedule B – Electrical bid items.

Change the Item Description to:

*L-858Y (Directional), Size 2, Style 2, (LED), Class 2, Mode 2, 1 Module, Airfield Sign, w/  
New Transformer, On Existing Concrete Sign Pad.*

The bid item references work for Signs #13 and #14. Call-outs on plan sheet E21 per Addendum No. 1 shall be updated accordingly.

### **Clarifications:**

#### **1. Sign Phasing:**

- a. Signs #13, #14, #15, #26, and #27 shall be completed at the end of Phase 5 under the control of an Airport escort.
- b. Sign #17A shall be completed during Phase 3. See the Civil Plans for updated phasing working limits.

#### **2. Sign Lengths/Modules:**

- a. The number of modules indicated is an estimate only for bidding purposes. The actual length/number of modules to be used for each sign will be determined by the sign manufacturer.

DGR Engineering — 1300 S Highline Avenue — Sioux Falls, SD 57110  
phone: 605.339.4157 — fax: 605.339.4175 — dgr.com

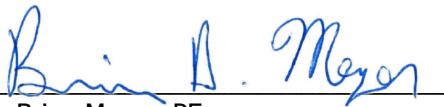
- b. Sign lengths may vary based on manufacturer.
- c. Confirm length with manufacturer prior to bid and adjust foundation according.

**3. Sign Legend (Panel) Replacement Nameplates:**

- a. Original Equipment Manufacturer (OEM) is Astronics DME, Navigate Series.
  - i. Sign #14.
    - 1. Cat #. L-858-M3-2-2-1
    - 2. S/N. KATY17002
    - 3. Style 2 (3-step)
  - ii. Sign #26.
    - 1. Cat #. L-858-M2-2-2-not legible
    - 2. S/N. Not legible
    - 3. Style 2 (3-step)
  - iii. Sign #27.
    - 1. Cat #. L-858-M2-2-2-1
    - 2. S/N. KATY17008
    - 3. Style 2 (3-step)

This addendum shall become a legal and binding part of the contract documents. All Bidders shall agree to accept the revisions indicated and prepare proposals in accordance therewith.

DGR Engineering

By   
Brian Meyer, PE

