

November 29, 2023

**RE: 23RD AVENUE LIFT STATION
MITCHELL, SOUTH DAKOTA
SPN #15994**

BID LETTING: THURSDAY, DECEMBER 7, 2023 @ 1:30 PM

ADDENDUM NUMBER 1

The following modifications are to be made to the plans and specifications for the 23rd Avenue Lift Station Project.

Section 30 31 00, Sanitary Sewer Piping, Paragraph 1.05 shall be modified by adding the following:

- I. Tracer wire will not be measured. Payment for tracer wire will be incidental to the sewer service piping and force main. All fasteners splice kits and other appurtenances shall also be considered incidental. Tracer wire shall be green for force main and shall be as specified in Section 33 14 17, Paragraph 2.09.
- J. Tracer wire access boxes and grounds will be measured on a per each basis. Payment for tracer wire access boxes and grounds will be on the basis of each tracer box or ground installed as called for on the Bid Form. Tracer wire, PVC conduit, wire fasteners, splice kits, adjusting to grade and other appurtenances shall be considered incidental to tracer wire access boxes. Tracer wire grounds shall be as specified in Section 33 14 17, Paragraph 2.09. Tracer wire access box shall be suitable for flush burial with a 5 inch tall cast iron top, integral brass terminals and a minimum 12 inch long ABS bottom section. Lid for tracer wire access box shall be dual terminal. Tracer wire box shall be intended for traffic. Tracer wire access box shall be Copperhead Industries Snakepit Roadway or approved equal. All tracer wire shall be tested by the Contractor upon completion of the pipe installation and backfilling.

Plan Sheet 8:

A steel step shall be added on the exterior of the dry pit access tube above ground level.

Plan Sheets E1 through E4:

The plan sheets were inadvertently excluded and are part of this addendum.

All other items of the plans and specifications remain unchanged.


Camden A. Hofer Project Engineer
Schmucker, Paul, Nehr & Associates

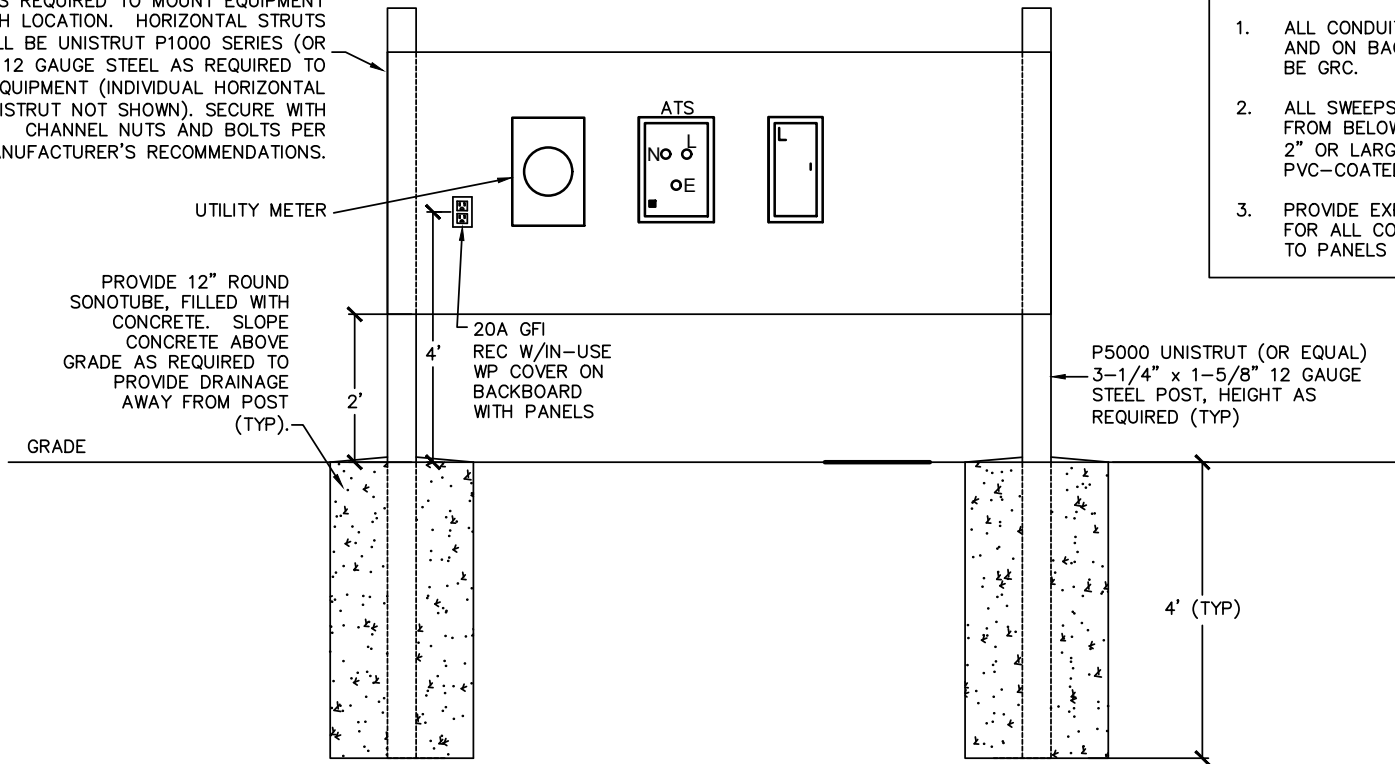


The undersigned hereby acknowledges receipt of Addendum Number 1 to the plans and specifications for the *MITCHELL 23RD AVENUE LIFT STATION*.

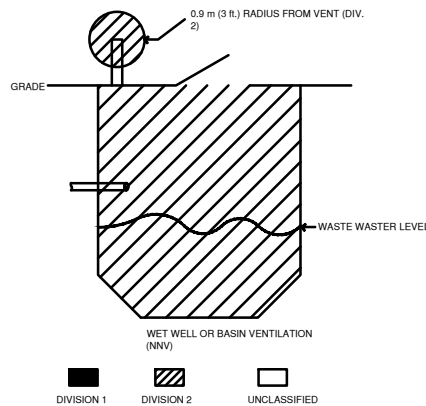
FIRM NAME _____
BY _____
TITLE _____
DATE _____

ATTACH THIS SIGNED ADDENDUM NO. 1 TO THE BID FORM WHEN SUBMITTING.

PROVIDE UNISTRUT H-FRAME BACKBOARD, WIDTH AS REQUIRED TO MOUNT EQUIPMENT AT EACH LOCATION. HORIZONTAL STRUTS SHALL BE UNISTRUT P1000 SERIES (OR EQUAL), 12 GAUGE STEEL AS REQUIRED TO MOUNT EQUIPMENT (INDIVIDUAL HORIZONTAL UNISTRUT NOT SHOWN). SECURE WITH CHANNEL NUTS AND BOLTS PER MANUFACTURER'S RECOMMENDATIONS.

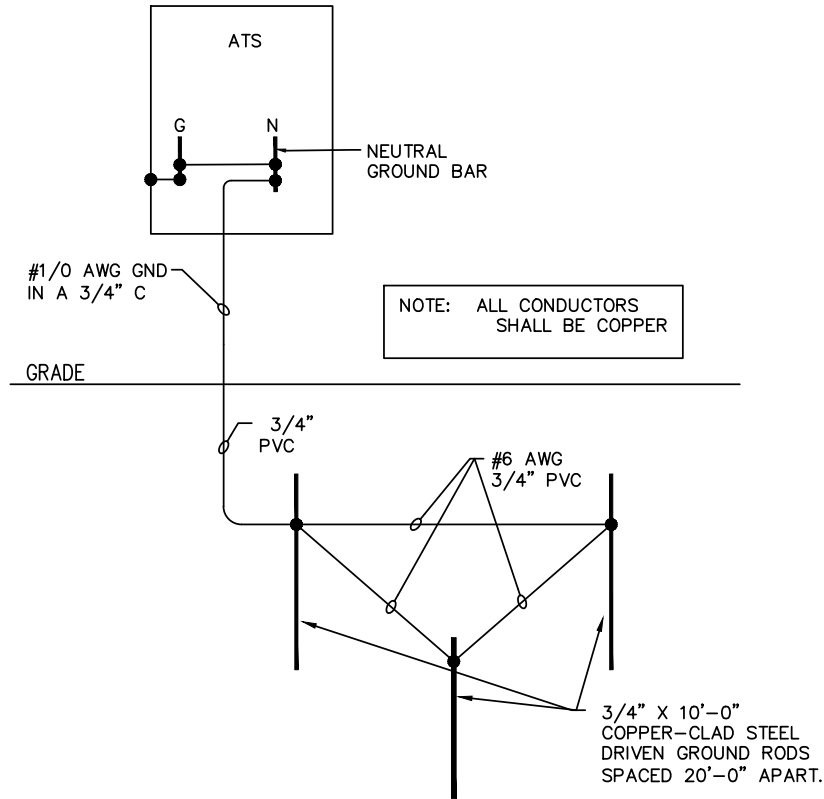


STANCHION DETAIL
NO SCALE

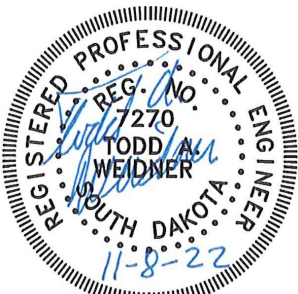


WET WELL HAZARDOUS LOCATIONS
NO SCALE

- NOTES:
1. ALL CONDUIT ABOVE GRADE AND ON BACKBOARD SHALL BE GRC.
 2. ALL SWEEPS TURNING UP FROM BELOW GRADE OR SIZE 2" OR LARGER SHALL BE PVC-COATED RIGID STEEL.
 3. PROVIDE EXPANSION JOINTS FOR ALL CONDUIT CONNECTED TO PANELS AND CABINETS.



GROUNDING ELECTRODE DIAGRAM
NO SCALE



Plan Horiz. Scale:	SEE PLANS
Drawn By:	DV
Checked By:	TW
Date:	11-08-2022
Project No.:	15994

Project Name:
23rd Ave.
Lift Station

Located in:
Mitchell,
South Dakota

Sheet Name:
Electrical Details

Sheet Number: Total Sheets:

E3

4

WPE# BE22040

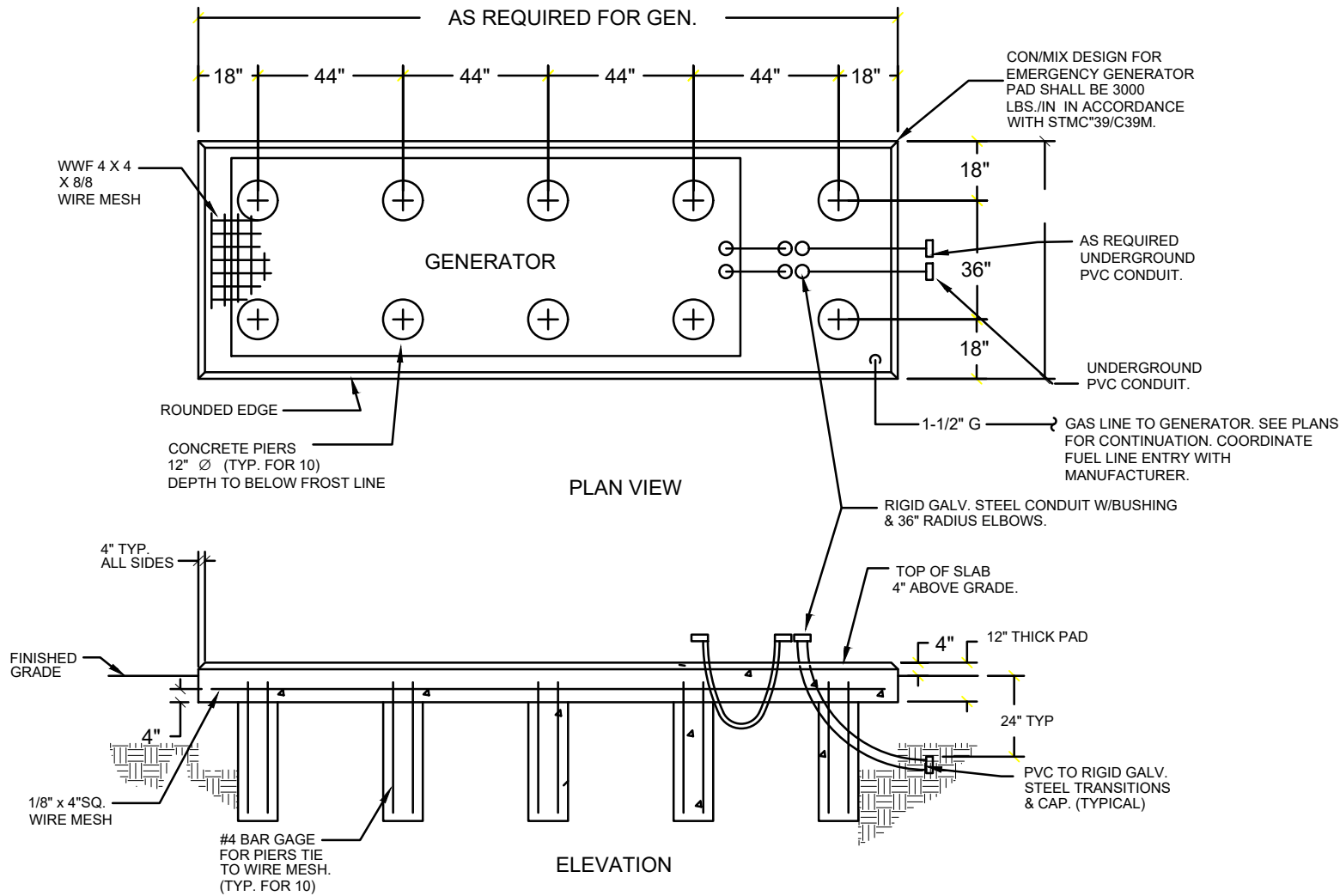
WPE WEST PLAINS ENGINEERING, INC.

4609 SOUTH TECHLINK CIRCLE ■ SIOUX FALLS, SD 57106
PHONE: (605) 362-3753 ■ FAX: (605) 362-3759
www.westplainsengineering.com
RAPID CITY, SD ■ SIOUX FALLS, SD ■ CASPER, WY ■ CEDAR RAPIDS, IA ■ BISMARCK, ND

GENERATOR SCHEDULE									
ATS #	FUEL TYPE	VOLT/	PHASE	KW	KVA	CIRCUIT BREAKER(S)	FEATURES	ENCLOSURE TYPE	COMMENTS
GEN-1	NATURAL GAS	208	3	54	68	200A LSI	LSI	SK, LB, CWP	
FEATURES: LSI = LONG TIME PICKUP, L ONG TIME DELAY, SHORT TIME PICKUP, SHORT TIME DELAY/INSTANTANEOUS CWP = COLD WEATHER PACKAGE LB = LOAD BANK BREAKER THERMAL MAG SPP = SHORE POWER PANEL BOARD IN ENCLOSURE FTXX = HOURS OF RUN TIME FOR FUEL TANK WIE = WALK IN ENCLOSURE SK = SKIN TIGHT FACTORY ENCLOSURE ANN = REMOTE ANNUNCIATOR CC = CUSTOM COLOR CM = CRITICAL SOUND MUFFLER PACKAGE EPO = EMERGENCY POWER OFF SWITCH - REMOTE MOUNTED									
GENERAL: PROVIDE CONCRETE PAD PER DETAIL AND MANUFACTURES REQUIREMENTS									

AUTOMATIC TRANSFER SWITCH SCHEDULE									
ATS #	TYPE/USE	VOLT/	POLE	AMPERAGE	SOCR	ENCLOSURE TYPE	SERVICE ENTRANCE RATING	FEATURES	COMMENTS
ATS	AUTOMATIC	208	3	200	22,000	NEMA 3R	200A BREAKER	IL ES TD PC	
FEATURES: B = BYPASS ISOLATION SWITCH TD = TIME DELAY TRANSFER (ADJUSTABLE) SP = SWITCH POSITION CONTACTS (ENGINE START TIME DELAY: 0-30 MIN) IL = INDICATOR LIGHTS (TRANSFER TIME DELAY: 0-10 MIN) MH = MECHANICALLY HELD ELECTRICALLY OPERATED ES = ENGINE START CONTACTS PC = MICROPROCESSOR BASED CONTROL WITH DIGITAL DISPLAY GFI = GROUND FAULT SENSING									
GENERAL: PROVIDE START/RUN SIGNAL WIRING AND CONDUIT TO GENERATOR									

PANEL L		VOLTS: 120/ 208		PHASE: 3		WIRE: 4		MAIN CAP. 200		AMPERES				
		AIC RATING 22000		GROUND BAR, NEMA 3R, SPD/TVSS										
		MOUNTING: SURFACE		FEEDER SIZE:				SEE RISER		MAIN CONNECTION: 150A MCB				
CCT NO	ITEM FED	LOAD WATTS	WIRE SIZE	CIRCUIT BREAKER			NEUTRAL	CIRCUIT BREAKER			WIRE SIZE	LOAD WATTS	ITEM FED	CCT NO
1	RECEPTACLE	360	12	20	1	BOLT-ON	A					15000	PREFAB LIFT STATION PANEL	2
3	BATTERY CHARGER	1000	12	20	2	BOLT-ON	B	BOLT-ON	3	150		15000		4
5		1000					C					15000		6
7	JACKET HEATER	1000	12	20	2	BOLT-ON	A	BOLT-ON	1	20	12	181	SITE LIGHTING POLE	8
9		1000					B	BOLT-ON	1	20	12	180	RECEPTACLE	10
11	SPARE			20	2	BOLT-ON	C	BOLT-ON	1	20			SPARE	12
13							A	BOLT-ON	1	20			SPARE	14
15	SPARE			20	2	BOLT-ON	B	BOLT-ON	1	30			SPARE	16
17							C	BOLT-ON	1	20			SPACE	18
19	SPACE						A	BOLT-ON	1	20			SPACE	20
21							B						SPACE	22
23	SPACE						C						SPACE	24
25							A						SPACE	26
27	SPACE						B						SPACE	28
29							C						SPACE	30
													APPROXIMATE CONNECTED LOAD	
													A 16,541 WATTS	
													B 17,180 WATTS	
													C 16,000 WATTS	



EMERGENCY GENERATOR PAD DETAIL
NO SCALE

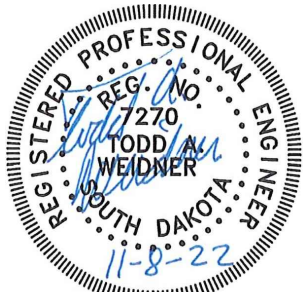
WPE# BE22040

WPE**WEST PLAINS ENGINEERING, INC.**

4609 SOUTH TECHLINK CIRCLE ■ SIOUX FALLS, SD 57106
PHONE: (605) 362-3753 ■ FAX: (605) 362-3759
www.westplainsengineering.com
RAPID CITY, SD ■ SIOUX FALLS, SD ■ CASPER, WY ■ CEDAR RAPIDS, IA ■ BISMARCK, ND

SPN
& Associates

Engineers - Planners - Surveyors
2100 North Sanborn Boulevard - P.O. Box 398
Mitchell, South Dakota 57301-0398
Phone: (605) 996-7761 - Fax: (605) 996-0015



Plan Horiz. Scale:	SEE PLANS
Drawn By:	DV
Checked By:	TW
Date:	11-08-2022
Project No.:	15994

Project Name:
**23rd Ave.
Lift Station**

Located in:
**Mitchell,
South Dakota**

Sheet Name:
Electrical Schedules

Sheet Number:	Total Sheets:
E4	4